

UHTUA
DESIGN

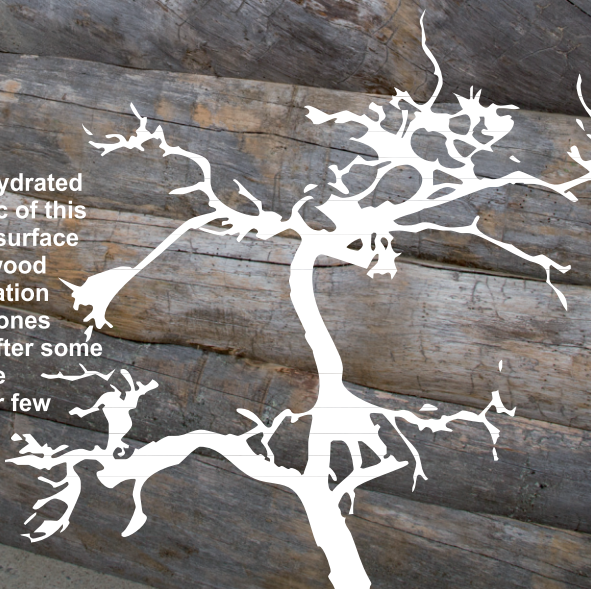
KELOPANEL

www.uhtuadesign.com

www.huliswood.fi

KELO

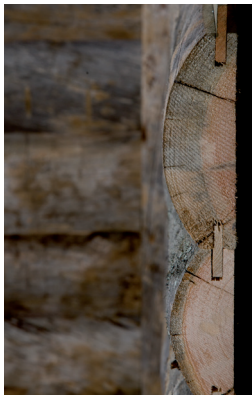
Kelo is high quality pine that has dehydrated while standing in place. Characteristic of this wood is the silvery gray shimmering surface and the reddish core. This precious wood develops through decades of dehydration in the dry coldness of the subarctic zones when the tree has stopped growing after some 300-400 years. After this, it is possible for the tree to stay upright for another few hundred years.



Genuine kelowall easily with Uhtua Design Kelopanel.

The kelo panel is the newest in the Uhtua Design assortment. The very quick and easy mountable panels suit perfectly for Saunas, rooms with fireplace or any other room in which a genuine Nordic atmosphere is wanted. Kelopanel can also be used for outdoor cladding in which more robust material can be used.

The surface of the panel follows the individual conditions of the trunk. Every panel is thus unique! The width and thickness of the panel vary according to the size of the round log that was sawn (width ca. 150-200mm / thickness ca. 30-80 mm). The kelo panel is sawn to measured lengths, the groove and the gray toned tongue makes the mounting easy.



Contact us for your
personal offer!

Olli Möttönen
Tel. +358 400350037
huliswood@huliswood.fi

Thomas Hernberg
Tel. +358 405122545
thomas.hernberg@fidec.fi



Huliswood is the oldest Finnish company importing kelo wood from Karelia. Our product family includes everything from logs and frames to sawn timber and even furniture.



Uhtua Design is a product line of Huliswood designed by Jonas Hakaniemi. This line includes high quality designer furniture, wall panels, saunas and hot tubs, all made of Kelo wood.